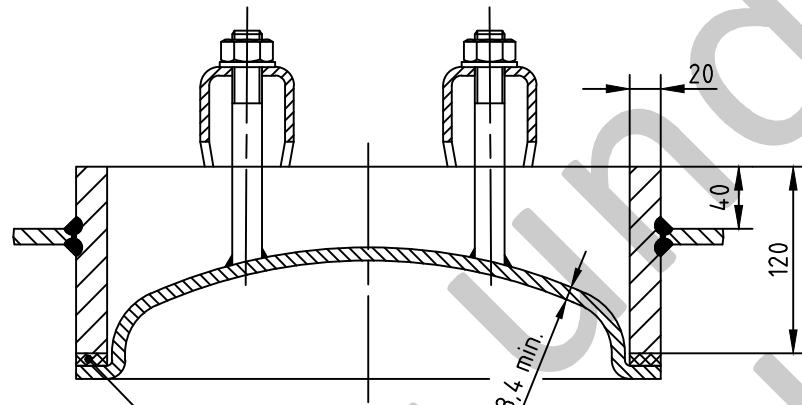
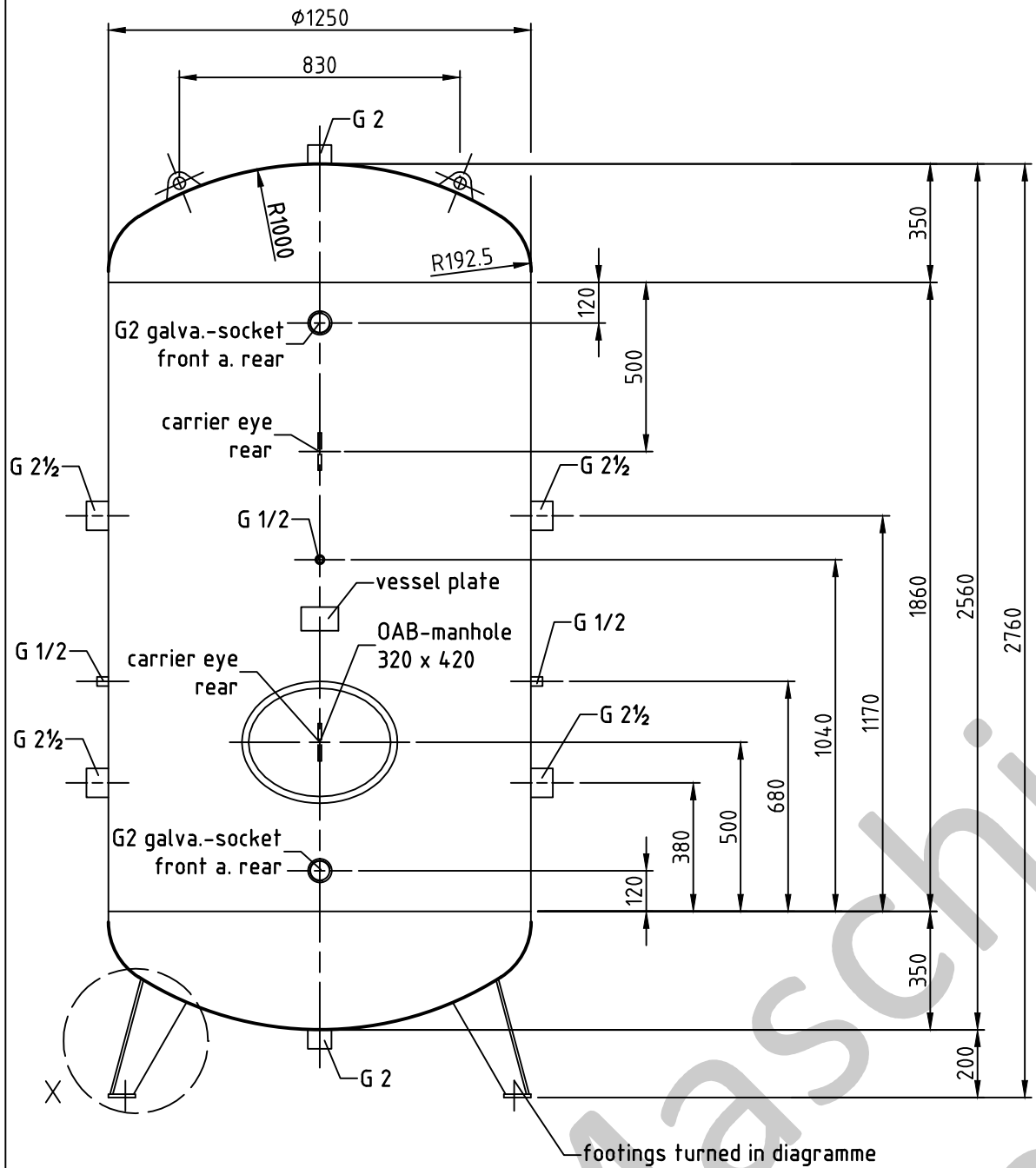
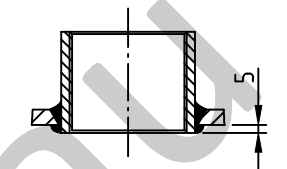


OAB 51 - manhole lock 320/420  
tested components

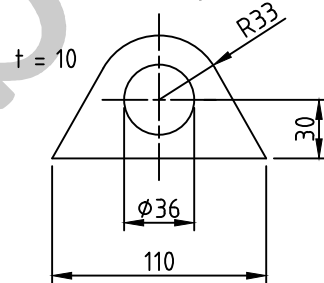


1a rubber gasket up to 70°C

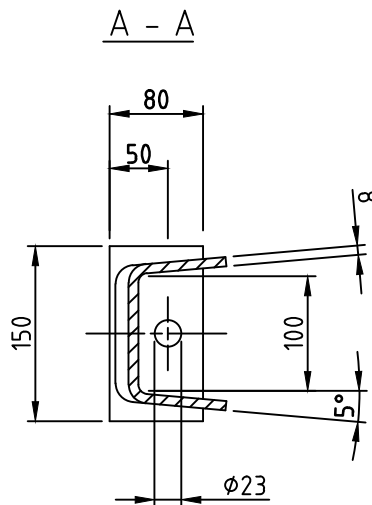
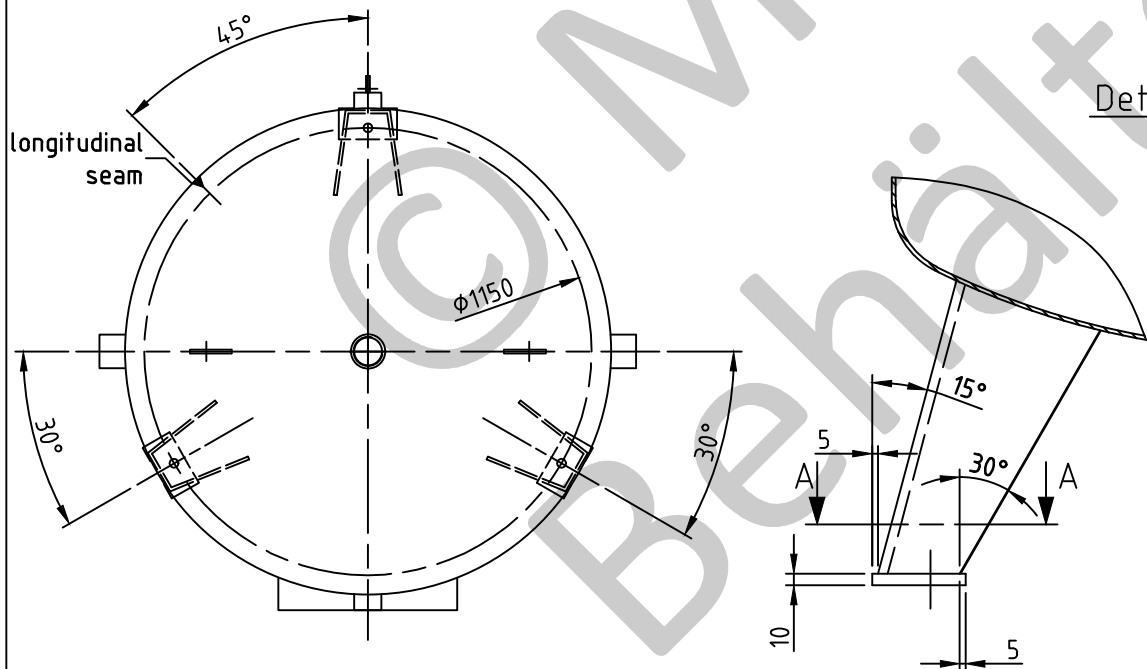
socket welding  
drain and plug socket  
inside flush



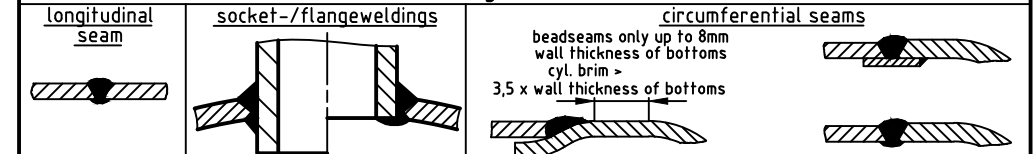
carrier eye



Detail X



SEAMS (unless otherwise indicated on drawing):



pressure variation :

pressure swing 0-16 bar max. operations 1.000

infinite operation of pressure swing within 20% of 16 bar

operational characteristics / calculation characteristics :

volume V (litre)	: 3000
max. working pressure PS (bar)	: 16
test pressure PT (bar)	: 22,88
min. working temp. TS (°C)	: -20
max. working temp. TS (°C)	: 50
fluid	: compressed air / nitrogen (fluid group 2)
location	: inside and outside building possible

coating :

inside : hot dip galvanized  
outside : hot dip galvanized

manufacturing and testing

acc. to PED 2014 / 68 / EU - AD 2000

conformity benchmark :

fluid group : 2	category : IV
diagram : 2	module : H1

scale :	1:20
our no. :	-
order no. :	-
used for :	M+B Standardvessel
weight :	ca. 850 kg
sheet :	1
of sheet :	1
date of plot :	17.06.2015
file :	ENG-010748

**Maschinen- und Behälterbau GmbH**

date	name
compl. 17.06.2015	CW
appr. 17.06.2015	Nota 2

follow protection mark acc. to DIN 34

Betzdorfer Str. 170  
57567 Daaden  
Tel. 02743/9330-12  
Fax 02743/3685  
Internet: www.mabe.de  
E-Mail: cad@mabe.de

description :  
**pressure vessel upright**  
3000 l 16 bar

drawing no. :	MB 020103-2.3000V/M/E	revision :	A
drawing no. of design inspection :	MB 020103-2	date of revision :	17.06.2015
		revision only on CAD	