

pressure variation :

pressure swing 0-11 bar max. operations 1.000

infinite operation of pressure swing within 20% of 11 bar

operational characteristics / calculation characteristics :

| | |
|--------------------------------|-------------------------------------------|
| volume V (litre) | : 1500 |
| max. working pressure PS (bar) | : 16 |
| test pressure PT (bar) | : 22,88 |
| min. working temp. TS (°C) | : -20 |
| max. working temp. TS (°C) | : 50 |
| fluid | : compressed air/nitrogen (fluid group 2) |
| location | : inside and outside building possible |

coating :

inside : raw

outside : primed (if customer wishes lacquered)

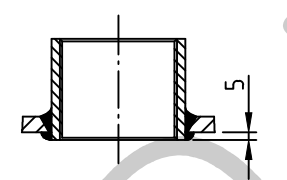
manufacturing and testing

acc. to PED 2014 / 68 / EU - AD 2000

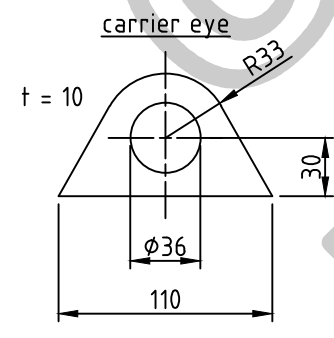
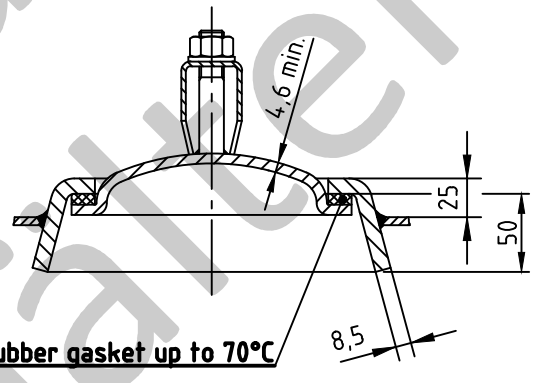
conformity benchmark :

| | |
|-----------------|----------------|
| fluid group : 2 | categorie : IV |
| diagram : 2 | module : H1 |

socket welding
drain and plug socket
inside flush



OAB 51 - handhole 100/150
tested components



| | |
|----------------|--------------------|
| scale : | 1:15 |
| our no. : | - |
| order no. : | - |
| used for : | M+B Standardvessel |
| weight : | ca. 480 kg |
| sheet : | 1 |
| of sheet : | 1 |
| date of plot : | 24.06.2015 |
| file : | ENG-010830 |

Maschinen- und Behälterbau GmbH

| | |
|-------------------|---------------|
| date | name |
| compl. 24.06.2015 | CW |
| appr. 24.06.2015 | <i>Nota 2</i> |

follow protection mark acc. to DIN 34

Betzdorfer Str. 170
57567 Daaden
Tel. 02743/9330-12
Fax 02743/3685
Internet: www.mabe.de
E-Mail: cad@mabe.de

description :

**pressure vessel horizontal
1500 l 16 bar**

| | | | |
|------------------------------------|---------------------|----------------------|------------|
| drawing no. : | MB 020102-2.1500G/E | revision : | A |
| drawing no. of design inspection : | MB 020102-2 | date of revision : | 24.06.2015 |
| | | revision only on CAD | |